



the fabric frame

HIGH PERFORMANCE
DISPLAY SYSTEM

HIGH PERFORMANCE
DISPLAY SYSTEM

Passion behind every detail

Since 1986, we have designed and crafted high performance display systems with passion behind every detail. Every part is designed in Sweden by our dedicated engineers focusing on simplicity, high tolerance, durability and appearance.

We are committed to deliver superior products made by materials such as specified aluminium with high surface finish, cold formed steel and high quality thermoplastics.

LET US INTRODUCE...

The Fabric and Light Frame system. It requires no tools or specialized labor to setup. The unique magnetic connectors guide you to a smooth, stable and safe installation and the optimized packaging minimizes shipping, drayage and storage costs.

The systems design consists of smooth, rounded edges along with profiles with high surface finish for a stylish environment.

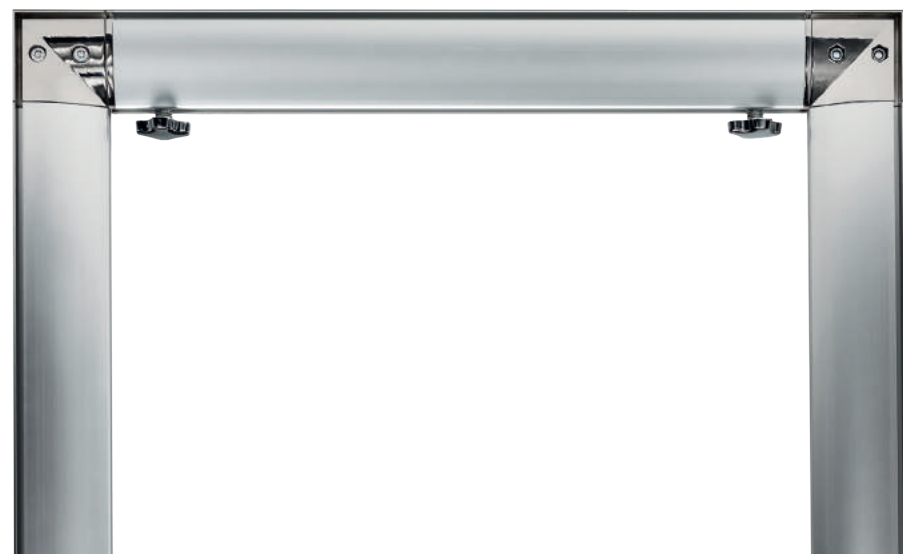
Explore the flexible and revolutionary world of the Fabric and Light Frame system - Whether you need a simple backwall or an advanced environment.

The fabric frame, light frame and counter



Portable and toolless

SPECIFIED ALUMINIUM
WITH HIGH SURFACE FINISH



Magnetic clutch.
Assembling made simple.

STRAIGHT
AND SIMPLE

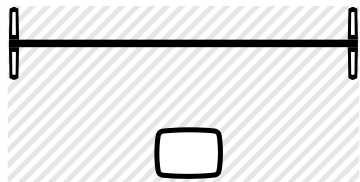


CONNECT FOR
MORE

the fabric frame



LAYOUT

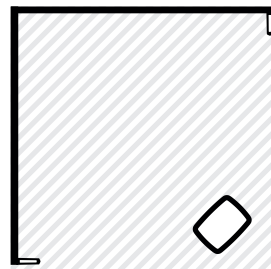


1 pc Fabric Frame 9.5 ft (height 8 ft), 1 pair double sided stabilizing feet, 1 pc Standard Case XL



9.84 X 4.92 ft
48 sq ft

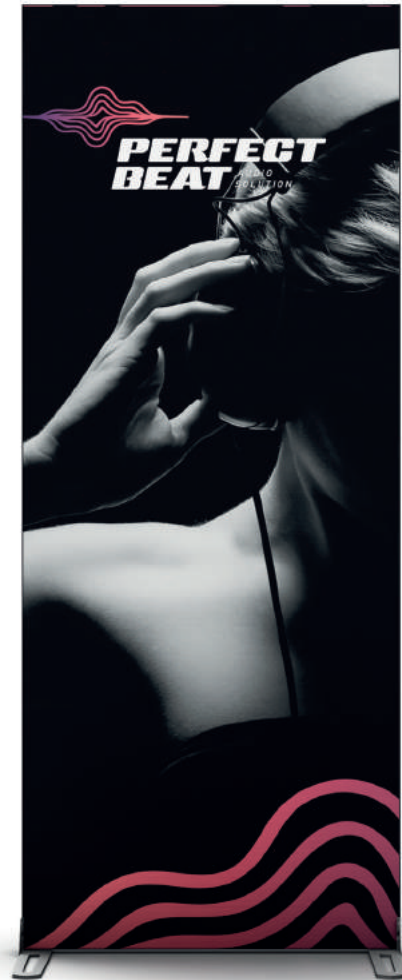
LAYOUT



2 pcs Fabric Frame 9.5 ft (height 8 ft), 1 pair single sided stabilizing feet, 1 pc Standard Case XL



9.84 X 9.84 ft
97 sq ft



3+
FEET



6+
FEET



13+
FEET



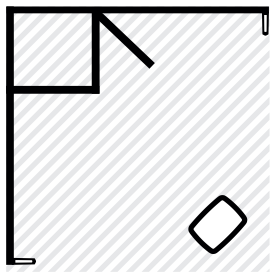
Frames to combine or stand alone

Up to 16+ feet wide, seamless

COUPLED WITH
STORAGE



LAYOUT



1 pc Storage room 37 inches x 3+ ft (height 8 ft), 2 pcs Fabric Frame 77 inches (height 8 ft), 1 pair single sided stabilizing feet, 1 pc Standard Case XL



9.84 X 6.6 ft
97 sq ft

the fabric
light frame

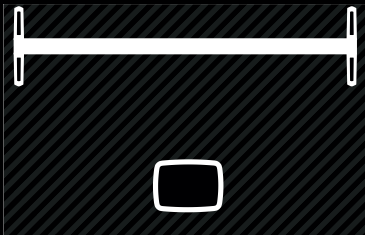
SIMPLE BUT
EYE-CATCHING



WHEN NEED TO
BE SEEN



LAYOUT



1 pc Fabric Light Frame 9 ft (height 8 ft), 1 pair double sided stabilizing feet, 1 pc Standard Case XL



9.84 X 6.6 ft
65 sq ft

LAYOUT



2 pcs Storage room 37 inches x 3+ ft (height 8 ft), 4 pcs Fabric Frame 77 inches (height 8 ft), 2 pcs Fabric Frame 20 inches (height 8 ft), 1 pc Fabric Light Frame 9 ft (height 8 ft), 1 pc Fabric Frame Counter 2 m, 1 pair single sided stabilizing feet



29.5 X 9.84 ft
290 sq ft



the choice is yours
BUILD WHATEVER

We create marketing tools for professionals

HIGH PERFORMANCE
DISPLAY SYSTEM

www.aaadisplay.com

